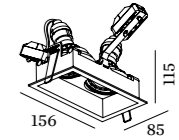
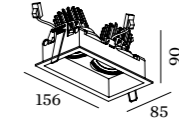
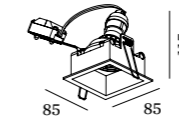
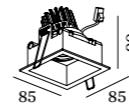
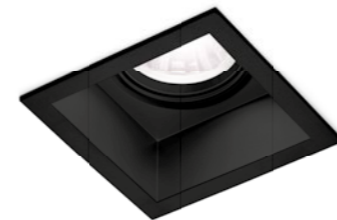
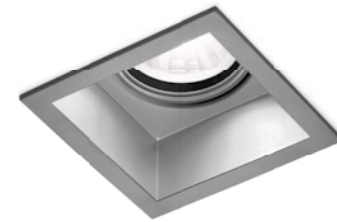
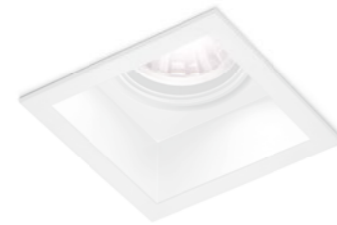




p. 587



1.0 LED

LED 7/10W | 350/500mA | 18Vf
COB 3-step | excl. power supply
aluminium powder coated
1800-2850K 16V

0.26kg IP20 36°

74x78 35°/35° 355° 95 2-18

CODE
118161W_
118161S_
118161Q_
118161B_

Light Colour Selection

LUMEN CRI	CODE
2700K 520/710 >90	3
3000K 540/740 >90	5
1800-2850K 330/450 >95	9

ALWAYS USE

power supply

CODE
350mA 10W 90223401
500mA 10W 90214404
500mA 15W dim 90224501

more power supplies on page 588

OPTIONAL

CODE
plasterkit 90017104

1.0 PAR16

PAR16 max.12W | GU10
100-240VAC | 50-60Hz
aluminium powder coated

0.24kg IP20 36°

74x78 35°/35° 355° 120 2-18

CODE
118120W0
118120S0
118120Q0
118120B0

OPTIONAL

PAR16 LED GU10 7W
phase-cut dim

CODE
2700K 901228W2
3000K 901228W4
1800-2850K 901229S9

more lamps and specs on page 593

OPTIONAL

CODE
plasterkit 90017104

2.0 LED

2xLED 7/10W | 350/500mA | 18Vf
COB 3-step | excl. power supply
aluminium powder coated
1800-2850K 16V

0.48kg IP20 36°

74x148 35°/35° 355° 95 2-18

CODE
118261W_
118261S_
118261Q_
118261B_

Light Colour Selection

LUMEN CRI	CODE
2700K 2x520/710 >90	3
3000K 2x540/740 >90	5
1800-2850K 2x330/450 >95	9

ALWAYS USE

power supply

CODE
350mA 10W 90223401
500mA 10W 90214404
500mA 15W dim 90224501

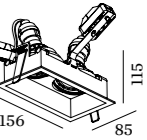
more power supplies on page 588

OPTIONAL

CODE
plasterkit 90017105

PLANO

CEILING RECESSED



2.0 PAR16

2xPAR16 max.12W | GU10
100-240VAC | 50-60Hz
aluminium powder coated

0.44kg IP20 36°

74x148 35°/35° 355° 120 2-18

CODE
118220W0
118220S0
118220Q0
118220B0

OPTIONAL

PAR16 LED GU10 7W
phase-cut dim

CODE
2700K 901228W2
3000K 901228W4
1800-2850K 901229S9

more lamps and specs on page 593

OPTIONAL

CODE
plasterkit 90017105