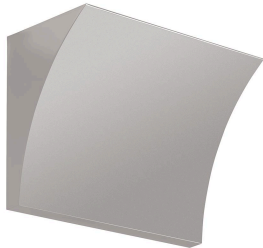


Pochette Led

by Rodolfo Dordoni , 2003



Wall lamp providing indirect light. Pressure die-cast Zamak alloy structure. Molded steel, galvanized white wall attachment containing the wall attachment system as well as the electrical devices. Pochette has a single dimmable light source in the traditional recessed series.



Mounting	Wall
Environment	Indoor
Finish	Chrome, Grey, Shiny white
Weight	1.6 Kg
Light sources available	144 x LED 20W 2700K 1707lm CRI90 [i]
Emergency	Without
Voltage	220-240V
Power	20W
Battery	No
Supply included	Yes

Materials Zamak

Colors

- F9704020 - Grey
- F9704057 - Chrome
- F9704009 - Shiny white

Certificate

